

LOW INSTALLATION COST FASTENERS

Shakeproof® is a range of fasteners, which reduce the in-place cost of fastening, lowering the cost of assembly, while meeting contemporary quality and performance needs. Shakeproof® fasteners roll form an internal thread in the material when it is screwed into the hole. They eliminate the need to pre-tap, reducing the amount of preparatory work needed to make the joint and eliminating all the associated costs.

Taptite®

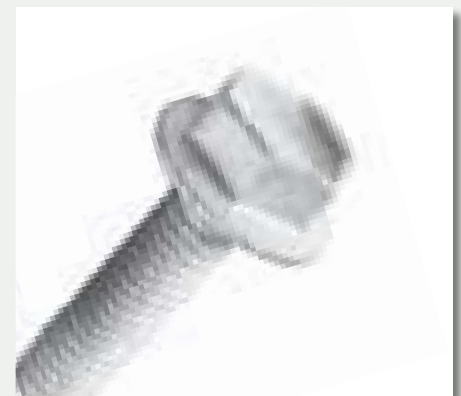
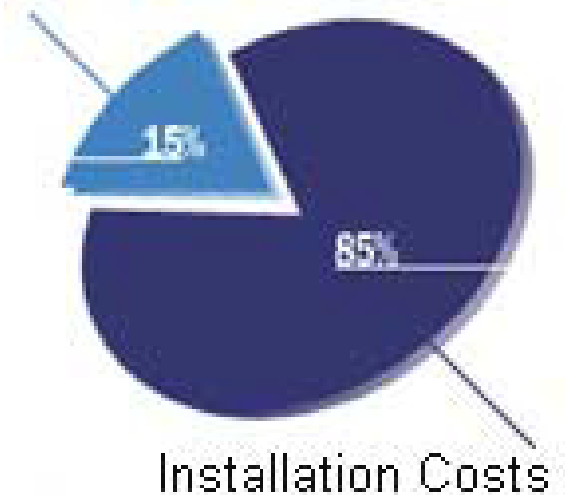
The Taptite® family of thread rolling screws form threads in plain cored, drilled or punched holes upon assembly, creating vibration resistant assemblies. This eliminates the need to pre-tap internal threads in ductile materials such as steel, aluminium and zinc. It also makes it unnecessary to add safe elements such as toothed washers and self-locking nuts – thus lowering the cost of assembly.

Taptite® II Trilobular thread-rolling screws roll-form strong, high integrity threads in drilled, punched or cored holes in ductile metals and castings. As each lobe of the screw moves through the pilot hole in the nut material, it forms and work-hardens the nut thread metal producing an uninterrupted grain flow. By elastic recovery, metal fills in behind the lobe, providing a greater area of thread contact with exceptional vibration resistance and fastening strength.

Prior to Taptite® fastening of thick metal pieces was achieved through either a nut and bolt joint or a tapped hole and bolt joint.

Taptite® II will never cross thread at assembly as their primary purpose is to form threads as they are driven into non-threaded nut members. This reduces the “in-place cost” of the joint and the cost of pre-tapping.

Cost of Fasteners



SELECTION GUIDE				
Applications				
Taptite II® For use in thick section steel and soft metal. Any application where a tapped metal thread would typically be specified. For use with all ductile metals, die castings and punch extruded metals.				
Product Range			How to Use	
Part No.	Description	Recommended Hole Size	Drive Torque	Drive Tool
301-0004	M6 x 28mm Hex Hd/Washer	5.5mm	6 Nm	8mm Hex Socket
301-0006	M6 x 12mm Hex Hd/Washer	5.5mm	6 Nm	10mm Hex Socket
301-0007	M6 x 25mm Hex Hd/Washer	5.5mm	6 Nm	10mm Hex Socket

Metroll Newcastle

ABN 97 001 446 439
 268 Macquarie Road
 WARNERS BAY NSW 2282
 AUSTRALIA

P: +61 (0)2 4954 5799

F: +61 (0)2 4954 0891

sales@metrollnewcastle.com.au

www.metrollnewcastle.com.au

LOW INSTALLATION COST FASTENERS

Duo-Taptite®

Duo-Taptite® has a stabilising, threaded dog point which ensures better starting ability. Its self-aligning characteristic combined with an easy pick-up requires minimal starting end load.

This reduces operator fatigue, eliminates interruptions in production and adds speed to every fastening operation.

The lower starting end pressure combines with lower driving torque to reduce time and power costs right down the line.

The higher, more uniform, strip-to-drive torque ratio provides a built-in safety factor against over-driving. This reduces operating costs by eliminating broken screws, damaged mating threads and inferior fastenings.



SELECTION GUIDE				
Applications				
Duo - Taptite® For use with all ductile metals, for die castings and punch extruded metals.				
Product Range		How to Use		
Part No.	Description	Recommended Hole Size	Drive Torque	Drive Tool
301-0004	M6 x 28mm Hex Hd/Washer	5.5mm	6 Nm	8mm Hex Socket
211-0010	M8 x 30 mm Hex Hd/Washer	7.3 mm	12 Nm	13 mm Hex Socket
211-0018	M6 x 13 mm FL-U/Cut Pozi Duo	5.5 mm	6 Nm	#3 Pozi Drive
211-0060	3/8 – 16 x 1.125 mm Hex Hd/Washer	8.8 mm	40 Nm	14 mm Hex Socket
211-0086	M8 x 12 mm Hex Hd/Washer	7.3 mm	12 Nm	10 mm Hex Socket
211-0097	M6 x 16 mm Pan Hd/Cross Recess	5.5 mm	6 Nm	#3 Phillips bit
211-0101	M6 x 10 mm Pan Hd/Cross Recess	5.5 mm	6 Nm	#3 Phillips bit



Metroll Newcastle

ABN 97 001 446 439
 268 Macquarie Road
 WARNERS BAY NSW 2282
 AUSTRALIA

P: +61 (0)2 4954 5799

F: +61 (0)2 4954 0891

sales@metrollnewcastle.com.au

www.metrollnewcastle.com.au

LOW INSTALLATION COST FASTENERS

Hi-Lo® / GX® Screws

Hi-Lo® Screws are a two start thread screw for thread rolling into plastics, both soft and brittle, wood, particleboard, masonite and MDF. Because it seats down rapidly with a high strip torque, it eliminates the need to pre-tap, a significant cost saving.

SELECTION GUIDE			
Applications			
Hi-Lo® Screws Used for any single use application (no rework) such as plastic tubular furniture.			
Product Range		How to Use	
Part No.	Description	Recommended Hole Size	Drive Tool
251-0001	11-16 x 0.75mm Pan Hd/ Cross Recess	3.9mm	#2 Phillips bit
251-0231	10-16 x 75mm Pan Hd/ Tamper Proof Drive	3.9mm	SM Trilobular
251-0248	11-16 x 0.5mm Pan Hd/Cross Recess	3.9mm	#2 Phillips bit
251-0270	10-16 x 21mm Pan Hd/ Washer	3.9mm	#2 Phillips bit

GX® Screws

Thin sheet metal was traditionally joined by self-tappers in association with a 'speed nut' to prevent strip out.

GX® screws are an in-place cost saving product because they are able to form a fine thread into mild steel sheeting. This eliminates the need to use any additional products in order to prevent strip-out.

SELECTION GUIDE				
Applications				
GX® Screws For joining thin sheet metal.				
Product Range		How to Use		
Part No.	Description	Recommended Hole Size	Drive Torque	Drive Tool
20-09	M5 x 22mm Hex Hd/ Washer	3.7mm	3.5 Nm	8mm Hex Socket



Metroll Newcastle

ABN 97 001 446 439
 268 Macquarie Road
 WARNERS BAY NSW 2282
 AUSTRALIA

P: +61 (0)2 4954 5799

F: +61 (0)2 4954 0891

sales@metrollnewcastle.com.au

www.metrollnewcastle.com.au

LOW INSTALLATION COST FASTENERS

Plastite®


Plastite®, screws are part of the Trilobular family of fasteners – thread rolling screws and bolts used to create strong, uniform load carrying internal threads, into untapped nut members upon installation. They are designed with extra wide spacing between narrow profile threads, resulting in exceptionally low induced stress and extra low boss bursting tendencies. This ensures assembly efficiency and performance while lowering the ‘in-place’ fastening costs.

Plastite® was developed specifically for use in plastics. Traditionally, plastics were joined by a self-tapping screw designed for use in sheet metal, never designed for use in plastics. This frequently caused splitting upon tightening and would often loosen during service or strip on assembly.

Plastite® will roll form in soft plastic without causing splitting, the inherent thread locking feature provides full relief for easy driving and effective resistance to vibrational loosening. The space thread design greatly reduces stripping on installation.

Plastite® ensures a fast, cost effective application – the easy starting, easy driving capabilities cut assembly time and costs. The exceptional holding power eliminates the need for costly inserts and lock washers.



SELECTION GUIDE			
Applications			
Plastite® When fastening thermoplastic mouldings, engineering resins and certain thermosets requiring service-ability and locking ability.			
Product Range		How to Use	
Part No.	Description	Recommended Hole Size	Drive Tool
231-0077	M4 x 15mm Round Hd/ Washer Cross Recess	3.8mm	#2 Phillips bit
231-0102	M6 x 16mm Pan Hd/Cross Recess	4.8mm	#3 Phillips bit

Metroll Newcastle

ABN 97 001 446 439
 268 Macquarie Road
 WARNERS BAY NSW 2282
 AUSTRALIA

P: +61 (0)2 4954 5799

F: +61 (0)2 4954 0891

sales@metrollnewcastle.com.au

www.metrollnewcastle.com.au