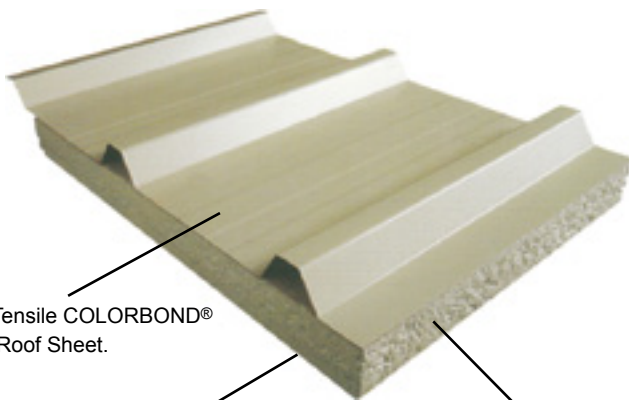


*Three in One Roofing, Insulation & Ceiling*

# SOLARSPAN®



High Tensile COLORBOND®  
Steel Roof Sheet.

Continuous COLORBOND®  
Steel Ceiling Finish.

Solid Polystyrene Core



# Metroll®

BETTER SERVICE • BETTER BUILDING SOLUTIONS

## About SOLARSPAN®

When you plan your new patio or roofing project, SOLARSPAN® is the building material of the future, especially if comfort, durability and cost are major considerations.

The SOLARSPAN® three in one unit combines roofing, insulation and ceiling in one durable, attractive panel.

SOLARSPAN® is all about comfort! It is ideal for patios as its insulation qualities give you a cool, comfortable outdoor living throughout the year.

For enclosures and larger applications, SOLARSPAN® provides an effective insulated roof and ceiling that ensures stable temperatures all year round.

A SOLARSPAN® roof is much quieter in the rain than traditional roof sheeting and there are no interior condensation problems.

A building designed using SOLARSPAN® provides uninterrupted spans that make the best use of available space.

SOLARSPAN® combined laminated structures offer strength and remarkable spanning capabilities, minimising the need for expensive and obtrusive supports.

These panels can be transported as a modular system to anywhere required.

SOLARSPAN® is quick and easy to assemble as a finished product, thus saving time and money.

Its clean, uninterrupted spans create attractive and low maintenance solutions for a wide variety of domestic and commercial applications.

SOLARSPAN® allows for design flexibility and is not restricted to a flat rectangular finish. The pre-painted COLORBOND® steel gives a long lasting durable finish.

Its simple, quick, modular design reduces the cost of building.

## Colours

SolarSpan® top skin is available in the following range of colours:



Surfmist®



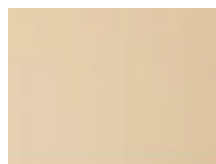
Classic Cream®



Paperbark®



Pale Eucalypt®

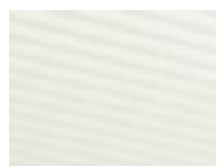


Pale Terracotta®

SolarSpan® bottom skin (ceiling) is available in the following colours:



Surfmist®



Surfmist® Deluxe



## Installation

These brief outline hints are not meant to be the only way or even the best way to build your SolarSpan® patio.

Before you touch the SolarSpan® panels, carry out points 1-3.

1. Remove the house gutter. Fit an extension flashing under existing house roof. Fit receiver channel as per engineer specifications up under the previously fitted extension flashing. SolarSpan® panels are 1m cover per panel. If you have the rear receiver channel at exactly 1m increments cut side flap off as per point 7 below. If you require slightly more width in your patio, leave more of the overflap on and adjust inside the Side Barge/Side Receiver Channel. Discuss this with your supplier, as longer rear receiver will be required.
2. Fit support beam or beams allowing a minimum of 2° pitch (35mm per metre) from the bottom of the receiver channel to the top of the beam/beams.
3. If the side of the patio roof is to start against a wall or fascia of the house, fit the side barge flashing/side receiver channel from the rear receiver channel and out over the beam/beams. If the patio roof is coming off the back wall or fascia only the side barge flashing can be fitted after all of the panels have been fitted.

Now to the SolarSpan® panels.

4. When moving panels off the pack ensure that they are never dragged. Always lift the panel vertically off the pack of panels.
5. Prepare a pair of carpenter's trestles by taping some polystyrene to the top surface.
6. Lift the first panel off the pack and place it with roof side up on the polystyrene taped to the trestles.
7. On the side of this panel trim the overlay off the top sheet leaving approximately 30mm of metal out from the polystyrene. This 30mm is turned up to dam the side of the panel (see Diagram 1).

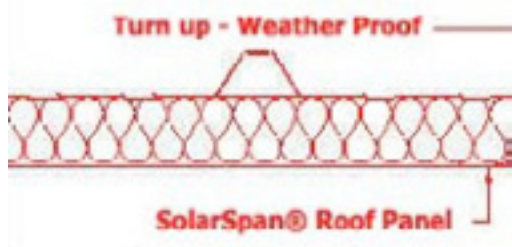


Diagram 1

8. Turn up or dam the rear pans of the panel with a 'turn up tool' or a tool similar to a wide jaw multitrip or a large shifting spanner (900mm) (see Diagram 2).



Diagram 2

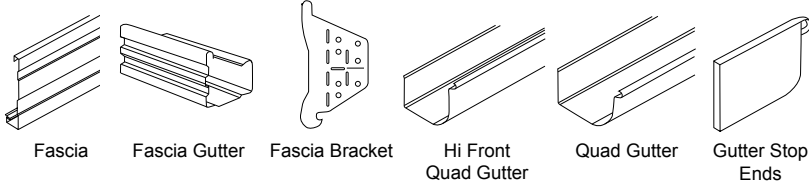
## Benefits

- Cost efficient
- Durable & strong
- Weatherproof
- Aesthetically pleasing
- Low maintenance
- Easy to install
- Modular design
- Large spans
- Excellent insulation qualities
- Multifunctional
- Composite technology
- Superior thermal performance
- 10 year warranty
- Flexible in design & application
- Reduces noise
- Wide range of COLORBOND® steel colours

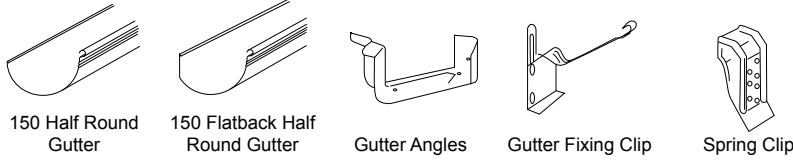
9. Throw a soft blanket or quilt over the beam/beams where the first panel will be in contact with the beam/beams.
10. Turn the panel over on the trestles; remove the core strip/plastic completely from the underside of the panel. Have your assistant touch the panel to short out the static electricity.
11. Turn the panel back over (now roof side up) and place the cutback end (gutter or low end) on to the covered beam/beams and fit male joint side of panel into the side barge/side receiver channel (case scenario 3(a)) and push back into the rear receiver channel.
12. Square off this first panel to suit the job (ie. Square off the house or off the beam/beams) and pin with a screw fixing in the top and underneath (receiver channel end) to hold it square and in place.
13. Prepare the second and subsequent sheets as per 7-9. Also, on the overlap flap of the top sheet, cut the corner off at the receiver channel end, so that it does not interfere with the turnup on the top of the previous panel.
14. Move the blanket covers over the beam/beams to where the next panel will contact the beam/beams. With a person at each end of the panel place the overlay flap of topskin over the previously fitted panel and with the panel at approximately 45° pull it down and engage the male interlock into the female interlock on the ceiling side of the previous panel. This may work first time or you may have to adjust your pressure down at each end of the panel to ensure that it happens. To be sure that you have been successful, the ceiling joint should be close to a perfect "V" joint, with little or no flat of the male interlock showing.
15. Slide this panel towards the house into the receiver channel. Fix each panel top and bottom as they are fitted into place.
16. After all panels are fitted, fit the barge/barges, the fascia, gutter and downpipes.

# CHECKLIST Do you require any of the following?

## Fascias, Gutters & Ancillary Items

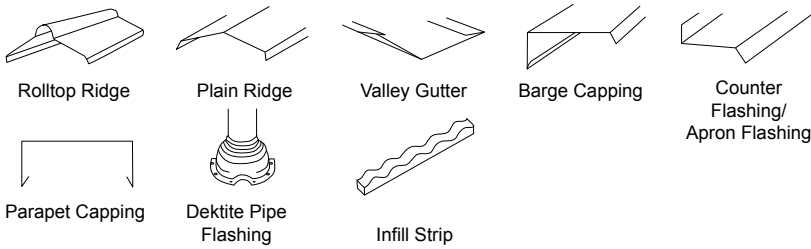


Fascia Fascia Gutter Fascia Bracket Hi Front Quad Gutter Quad Gutter Gutter Stop Ends



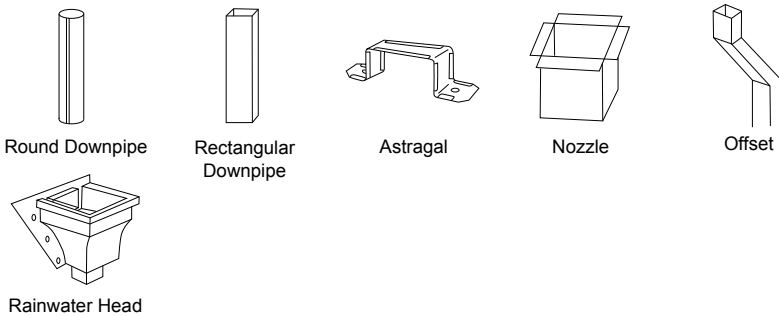
150 Half Round Gutter 150 Flatback Half Round Gutter Gutter Angles Gutter Fixing Clip Spring Clip

## Flashings & Cappings



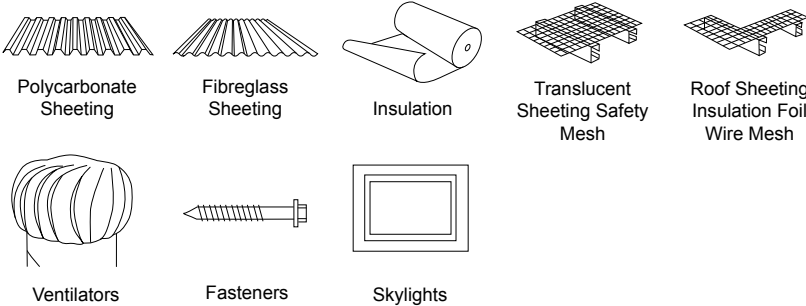
Rolltop Ridge Plain Ridge Valley Gutter Barge Capping Counter Flashing/Apron Flashing Parapet Capping Deklite Pipe Flashing Infill Strip

## Downpipes & Ancillary Items



Round Downpipe Rectangular Downpipe Astragal Nozzle Offset Rainwater Head

## Other Products



Polycarbonate Sheeting Fibreglass Sheeting Insulation Translucent Sheeting Safety Mesh Roof Sheeting Insulation Foil Wire Mesh Ventilators Fasteners Skylights

Distributed By:

Metroll Pty Ltd. ABN 97 001 446 439. All reasonable care has been taken in the compilation of the information contained in this brochure. All recommendations on the use of our products are made without guarantee as conditions of use are beyond the control of Metroll Pty Ltd. It is the customers responsibility to ensure that the product is fit for its intended purpose and that the actual conditions of use are suitable. Metroll Pty Ltd, pursues a policy of continuous development and reserves the right to amend specifications without prior notice. The Metroll M and Logo are registered trademarks of Metroll Pty Ltd.

AQUAPLATE®, COLORBOND®, GALVASPAN®, ZINCALUME® steels, Thermatech® are all registered trade marks of BlueScope Steel Limited.



## NSW Branches

### METROLL - Sydney

165 Airds Road, Minto, NSW 2566  
PO BOX 1665, Campbelltown, NSW 2560  
P: 1300 766 346 (Australia)  
F: 1300 766 347 (Australia)  
E: sales@sydney.metroll.com.au  
www.metroll.com.au/sydney

### METROLL - Newcastle

268 Macquarie Road, Warners Bay, NSW 2282  
PO BOX 267, Cardiff, NSW 2285  
P: +61 (0)2 4954 5799  
F: +61 (0)2 4954 0891  
E: sales@metrollnewcastle.com.au  
www.metrollnewcastle.com.au

### METROLL - Tamworth

Lot 2 Jewry Street, Tamworth, NSW 2340  
PO BOX W3177, West Tamworth, NSW 2340  
P: +61 (0)2 6765 4799  
F: +61 (0)2 6765 2672  
E: sales@tamworth.metroll.com.au  
www.metroll.com.au/tamworth

### METROLL - Lismore

29 Krauss Avenue, South Lismore, NSW 2480  
P: +61 (0)2 6622 6677  
F: +61 (0)2 6622 6678  
E: sales@lismore.metroll.com.au  
www.metroll.com.au/lismore

### METROLL - Dubbo

3 Jannali Road, West Dubbo, NSW 2830  
PO BOX 615, Dubbo, NSW 2830  
P: +61 (0)2 6882 8277  
F: +61 (0)2 6882 8008  
E: sales@dubbo.metroll.com.au  
www.metroll.com.au/dubbo

### Palmer Steel Frame & Truss P/L Narrabri

15 Kaputar Road, Narrabri, NSW 2390  
PO BOX 294, Narrabri, NSW 2390  
P: +61 (0)2 6792 1082  
F: +61 (0)2 6792 4322  
E: info@palmerframes.com.au  
www.palmerframes.com.au

For other state contacts visit  
www.metroll.com.au